

# MOBILE RAMPS



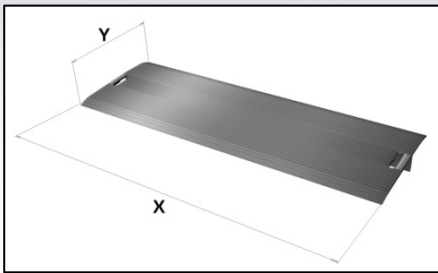
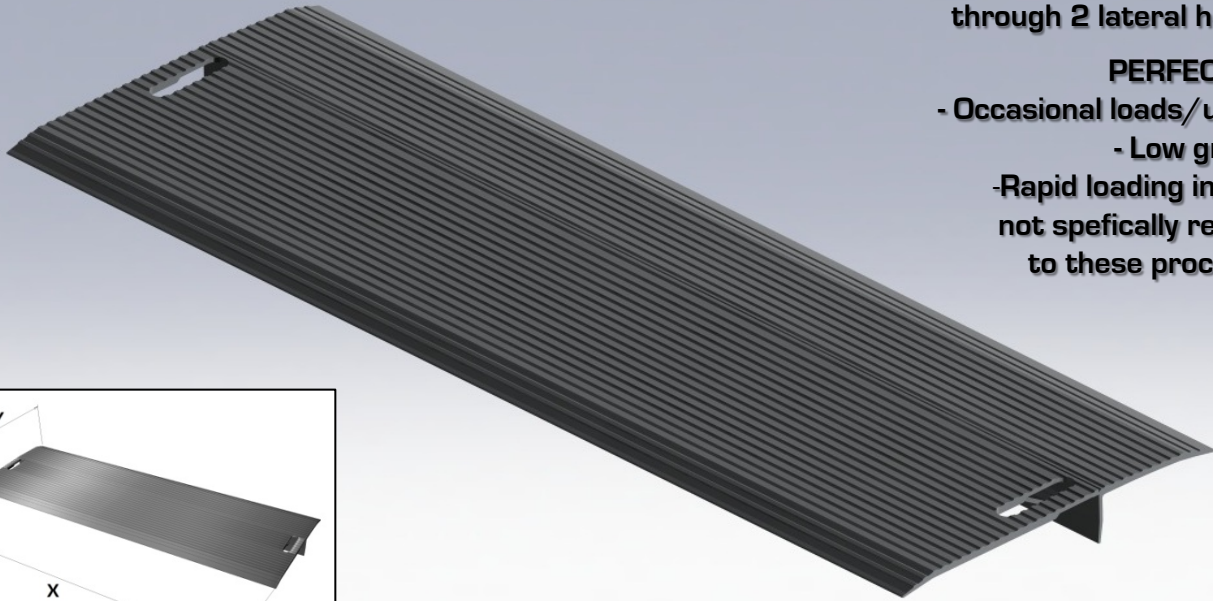
**TM PEDANE**  
**TM**  **s.r.l.**

# 16. DP

Mobile ramp,  
 with light weight  
 and easy positioning  
 through 2 lateral handles

**PERFECT FOR:**

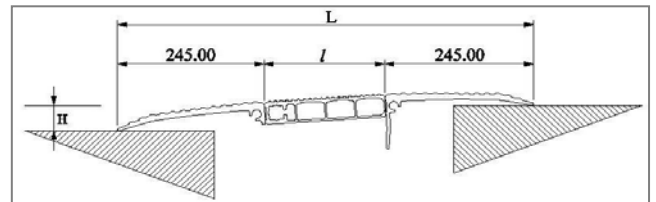
- Occasional loads/unloads
- Low gradient
- Rapid loading in points not specifically reserved to these procedures



## 16a. DPC (bent lip)

CODE	X	Y	H+/-	WEIGHT
	(mm)	(mm)	(mm)	(Kg)
DPC 50	1100	490	70/70	19
DPC 90	1100	890	110/110	33
DPC 130	1100	1290	165/165	47
DPC 50A	1650	490	70/70	28
DPC 90A	1650	890	110/110	49
DPC 130A	1650	1290	165/165	70
DPC 50B	2000	490	70/70	34
<b>DPC 90B</b>	<b>2000</b>	<b>890</b>	<b>110/11</b>	<b>59</b>
DPC 130B	2000	1290	165/165	84

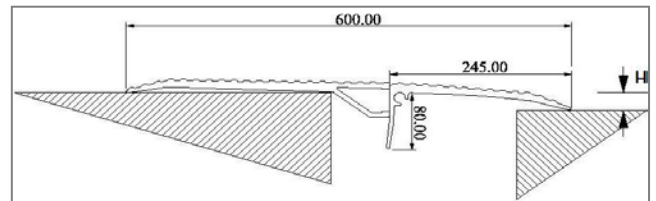
## CAPACITY 4000 KG



**PERFECT WHEN TRUCK CAN BE HIGHER AND LOWER THAN LOADING BAY**

## 16b. DPD (straight lip)

CODE	X	Y	H+/-	WEIGHT
	(mm)	(mm)	(mm)	(Kg)
DPD 60	1100	600	25/80	23
DPD 60A	1650	600	25/80	34
<b>DPD 60B</b>	<b>2000</b>	<b>600</b>	<b>25/80</b>	<b>41</b>



**SMOOTHER LIP (MORE COMFORTABLE FOR LITTLE WHEELS VEHICLES) AND HIGHER CAPACITY**

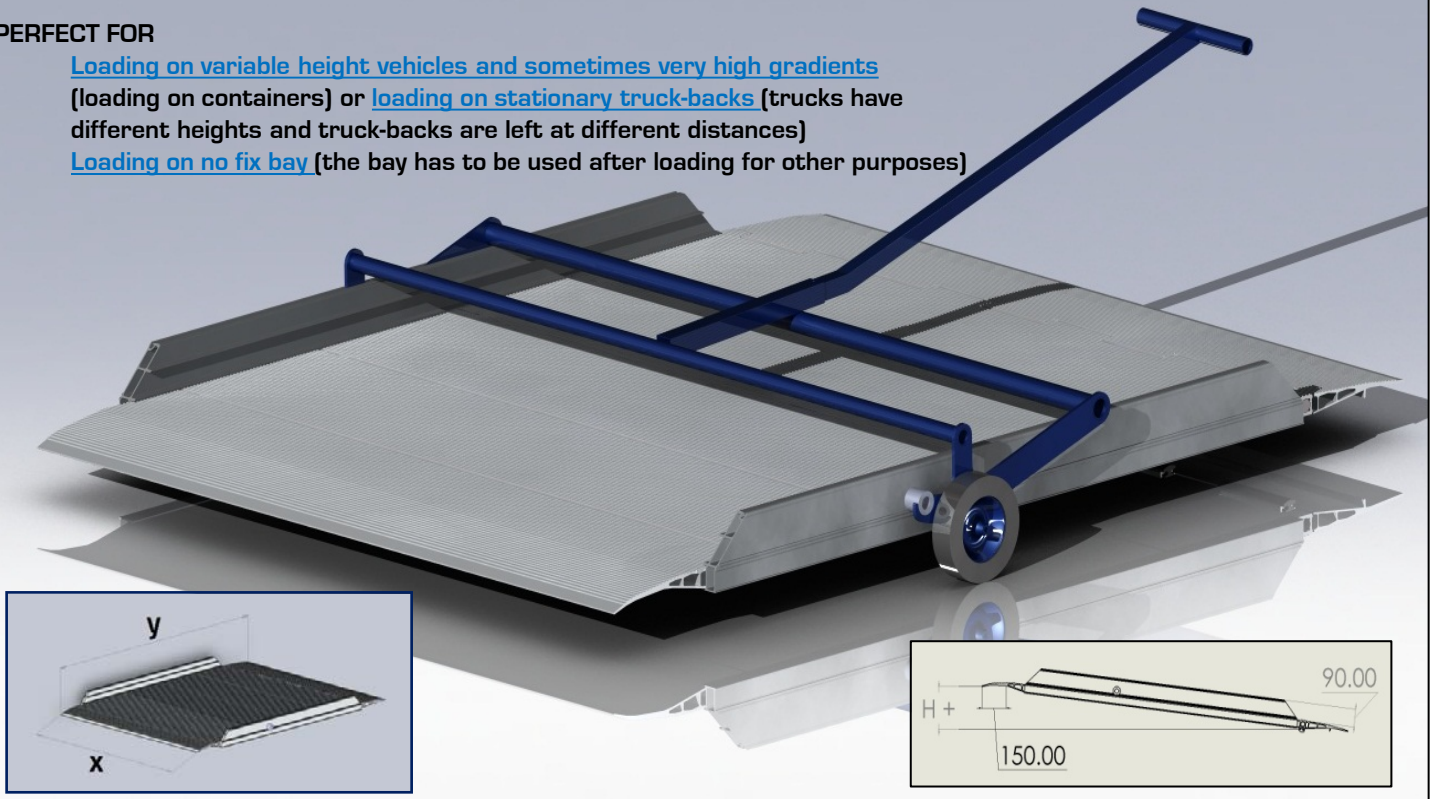
H+/- difference in height calculated according to UNI EN 1398 standard for **12,5%** gradient allowed for forklifts

## CAPACITY 6000 KG

# 17. PLUS

**PERFECT FOR**

- [Loading on variable height vehicles and sometimes very high gradients](#) (loading on containers) or [loading on stationary truck-backs](#) (trucks have different heights and truck-backs are left at different distances)
- [Loading on no fix bay](#) (the bay has to be used after loading for other purposes)

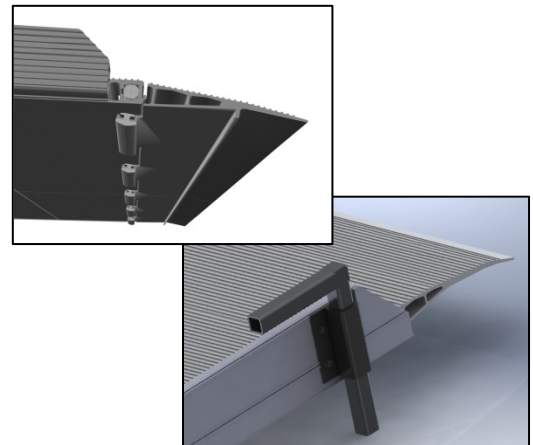


**DETAILS:**

- Aluminum 6060 alloy extruded profile with 6000kg capacity
- Hinged Back-lip for perfect fitting in loading surface
- gummy antislip seal to groundfloor mounted on backflip

## CAPACITY 6000 KG

**RUBBER ANTISLIP SEALS INCLUDED**



CODE	X	Y	WEIGHT	H+
	(mm)	(mm)	(Kg)	(mm)
PLUS150A	1650	1200*	100	200
PLUS190A	1650	1600*	120	250
PLUS230A	1650	2000*	140	300
PLUS150B	2000	1200*	125	200
PLUS190B	2000	1600*	150	250
PLUS230B	2000	2000*	180	300

\* Y factor DOES NOT include 300 mm hinged connection lip  
 H+/- difference in height calculated according to  
 UNI EN 1398 standard for **12,5% max gradient** allowed for loading ramps

**LATERAL SAFETY BLOCKS OPTIONAL**

**FOR FORKLIFT POSITIONING**

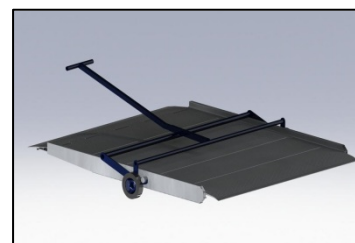
**CAR-MU1650  
 CAR-MU2000**



**TROLLEYS**

**FOR MANUAL POSITIONING**

**CAR-MA1650  
 CAR-MA2000**



# 18. KING



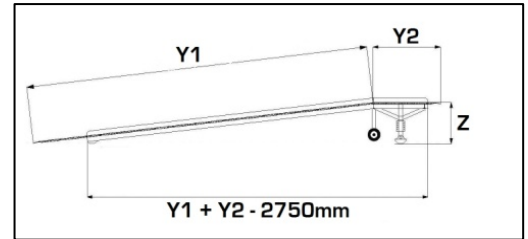
**Yard ramp,  
 PERFECT TO  
 load from groundfloor  
 to trucks/containers  
 with forklifts**



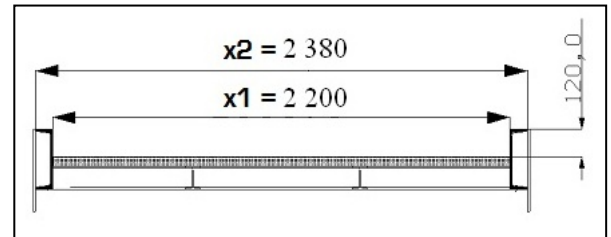
**CAPACITY 8000 KG**

**DETAILS:**

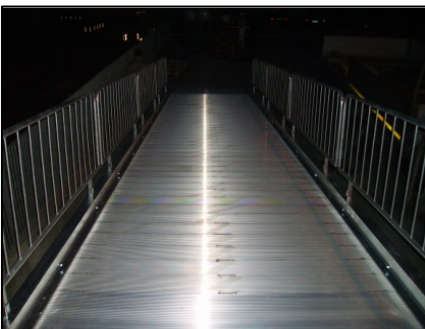
- Profile with "IPE200/240" galvanized steel axles for 8000kg capacity
- Connection bars with "IPE160/180 galvanized steel carrying axles.
- Metal junctions and mechanical accessories firmly linked through bolts and screws.
- Aluminum 6060 alloy extruded antislip plate with side 100mm safety border.
- Manually adjustable feet for different heights. [-/+ 300mm]
- Aluminum 6060 alloy extruded CR40B connection lip for perfect fitting on truck-back.
- Rubber wheels for ramp moving through forklift at the groundfloor side.
- Galvanizing treatment to every steel part of the structure.



CODE	X1	X2	Y1	Y2	Z
	(mm)	(mm)	(mm)	(mm)	(mm)
<b>KING 100</b>	2200	2380	10000	2400	1100
<b>KING 120</b>	2200	2380	12000	2400	1100
<b>KING 140</b>	2200	2380	14000	2400	1100



## ACCESSORIES



**Lateral antifalling  
 handrails**



**Grid steel sheets  
 (for loading/unloading outside or  
 in relevant slip risk situations)**



**PVC covering tunnel**