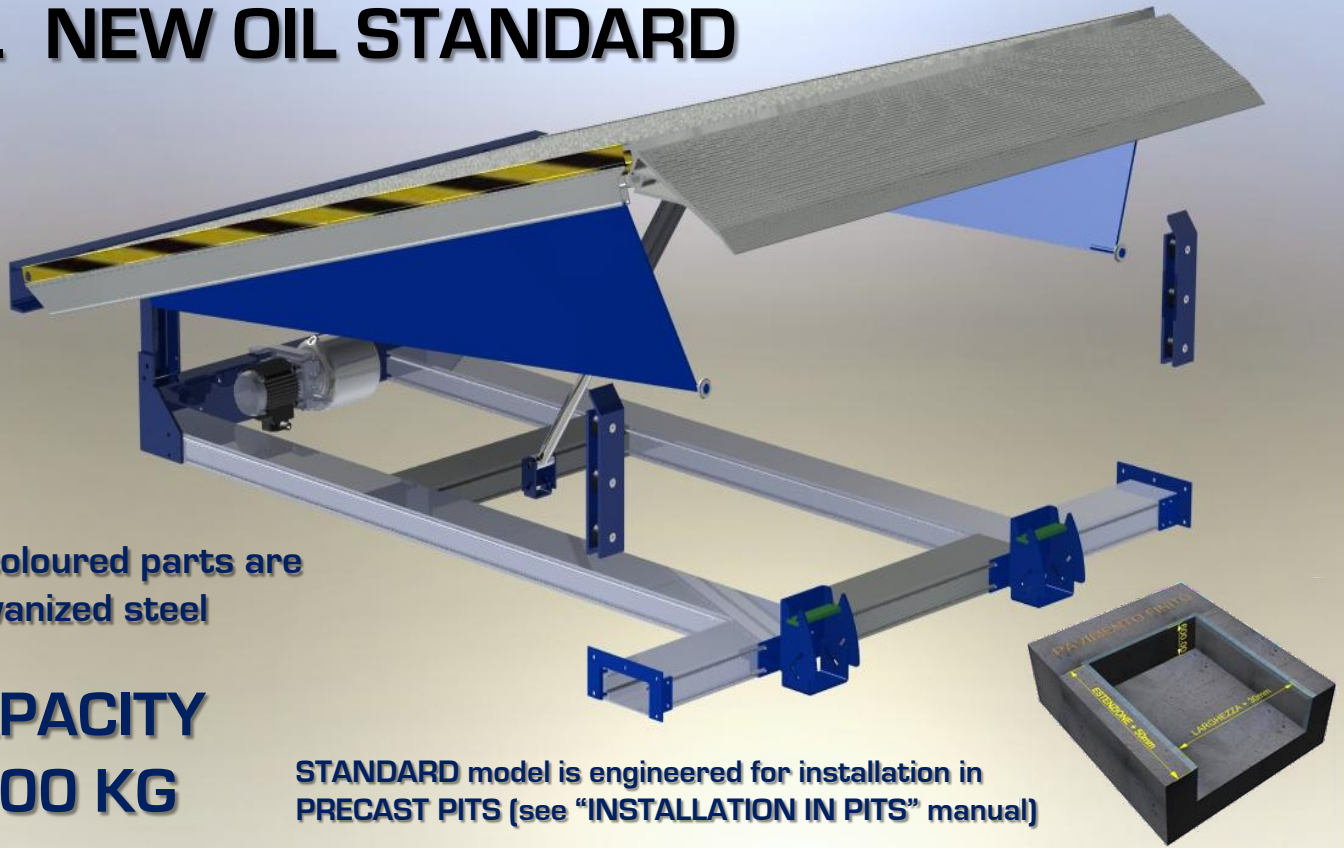


# 1. NEW OIL STANDARD



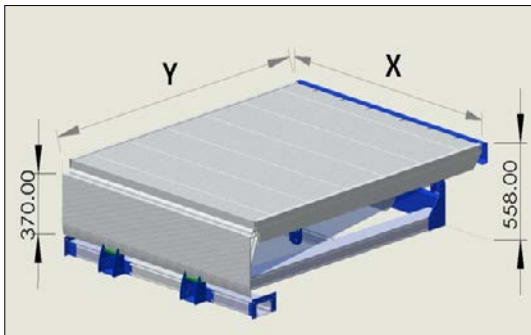
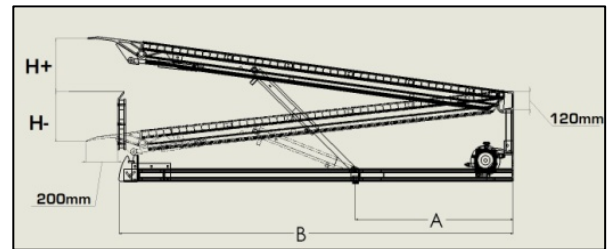
Blue coloured parts are  
 in galvanized steel

**CAPACITY  
 6000 KG**

**STANDARD model is engineered for installation in  
 PRECAST PITS (see "INSTALLATION IN PITS" manual)**

## DETAILS

- Plate in aluminum extruded 6060 with 6000kg maximum capacity and anti-slip cross-ribbing surface treatment. Profile specifically engineered for concentrated loads
- Hinged aluminum lip on one 370mm extruded with antislip surface and hinge joint without added elements
- Double effect lip control oil piston.
- Single effect plate lifting oil piston with parachute valve
- hydraulic control unit activated by three-phase engine
- Power panel according to CEI 20/22/2 (IP 55) standards with 7mts long connection cable included
- Standard TAM2F gummy buffers (see TAM LINE chpt.) included
- Anticrushing/shearing hinged carters.



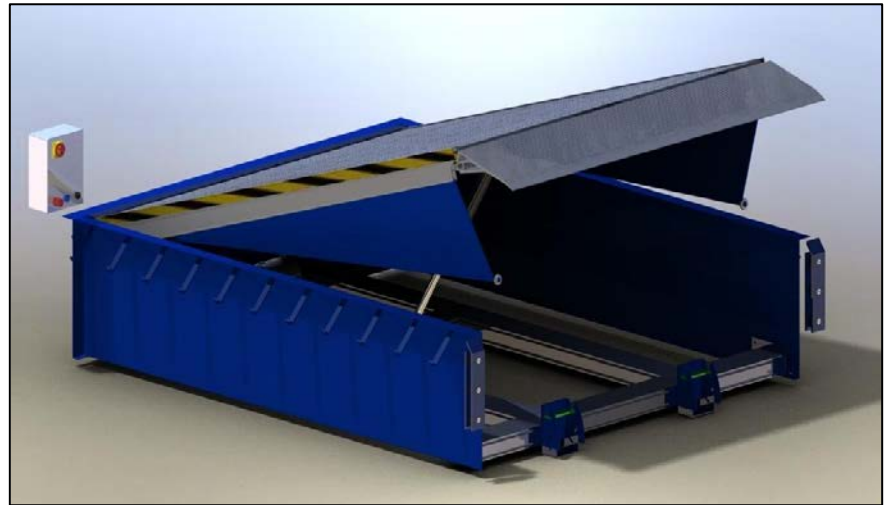
CODE	X mm	Y mm	H+/- mm	WEIGHT kg
NEW 150A-ALL	1650	1500+ LIP 370	240	200
NEW 200A-ALL	1650	2000+ LIP 370	300	250
NEW 250A-ALL	1650	2500+ LIP 370	360	330
NEW300A-ALL	1650	3000+ LIP 370	430	400
NEW 150B-ALL	2000	1500+ LIP 370	240	250
NEW 200B-ALL	2000	2000+ LIP 370	300	330
<b>NEW 250B-ALL</b>	<b>2000</b>	<b>2500+ LIP 370</b>	<b>360</b>	<b>430</b>
NEW 300B-ALL	2200	3000+ LIP 370	430	470
NEW 150C-ALL	2200	1500+ LIP 370	240	280
NEW 200C-ALL	2200	2000+ LIP 370	300	360
NEW 250C-ALL	2200	2500+ LIP 370	360	460
NEW 300C-ALL	2200	3000+ LIP 370	430	500

H+/-  
 difference in height calculated according to  
 UNI EN 1398 standard  
 for 12,5% gradient allowed for forklifts

## 5. ACCESSORIES

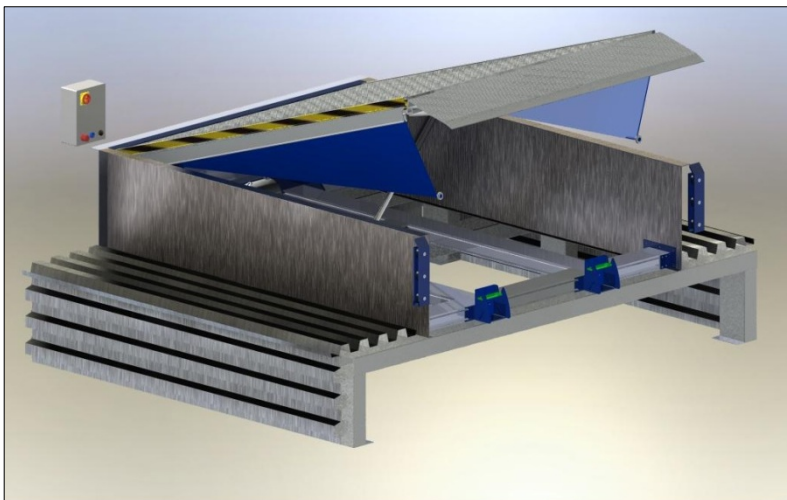
### BF:

optional boxframe elements  
 to be combined with  
NEW OIL STANDARD  
 hydraulic dock levelers  
 for installation  
 before pit construction



### DETAILS:

- Couple of lateral press-formed 4mm thick sheets
- Backside press-formed thick sheet 100x200x3mm + coating 1mm thick sheet



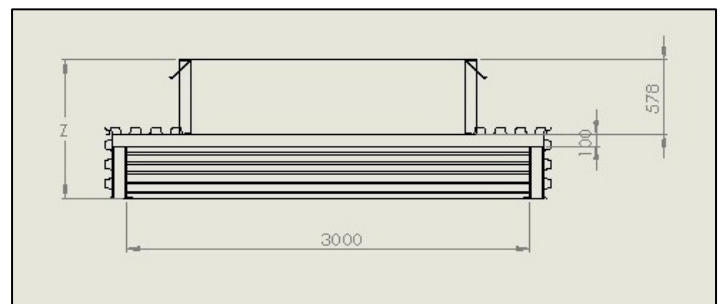
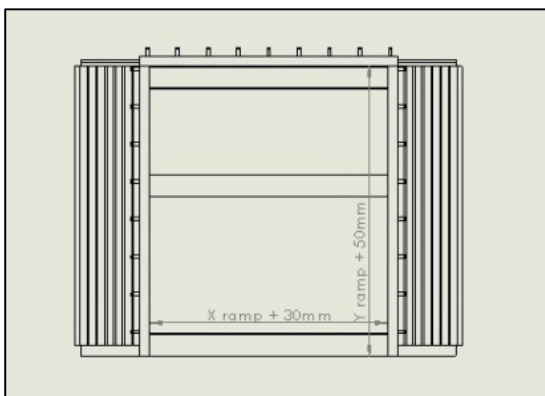
### VS:

### tailboard housing

Combinable with  
NEW OIL STANDARD + BF or OIL  
 hydraulic dock levelers  
 in order to load/offload trucks  
 with CANTILEVER TAIL LIFTS

### DETAILS:

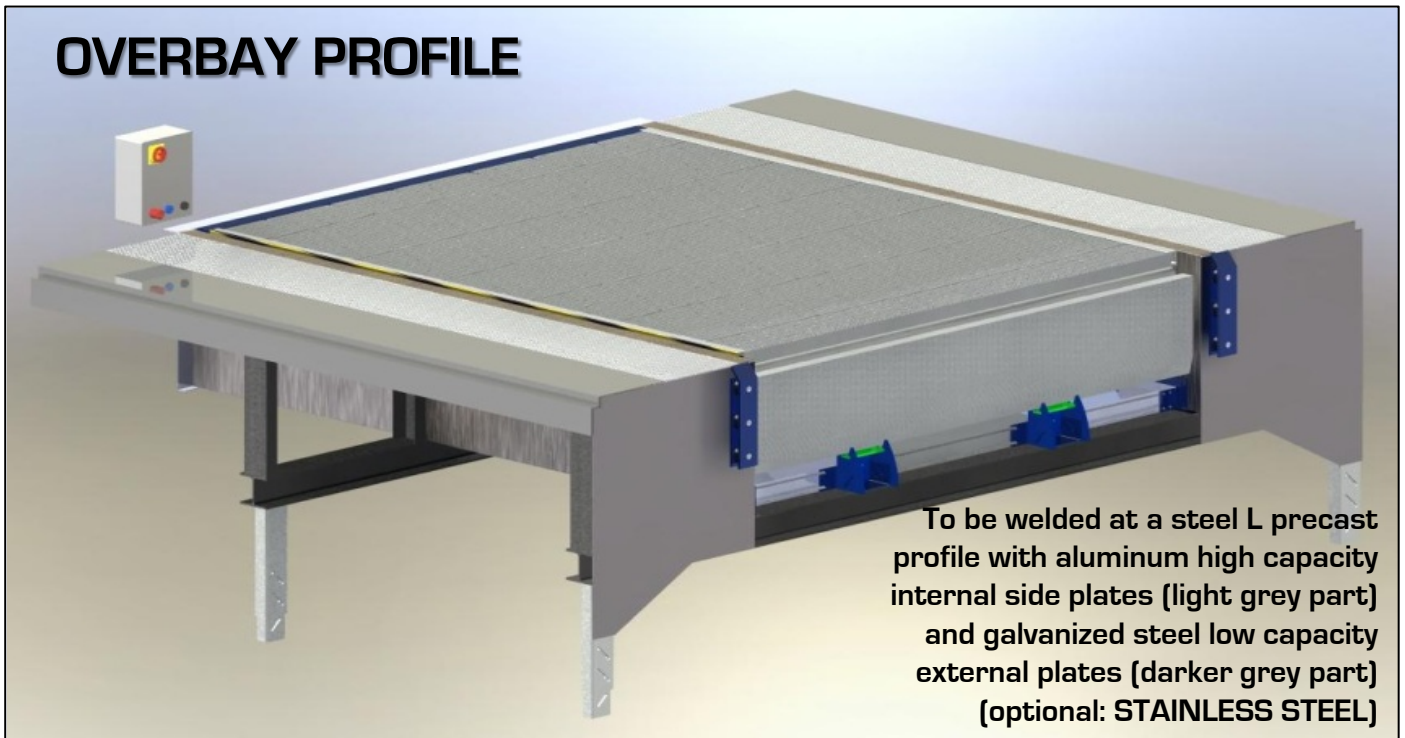
- **Tubular galvanized steel structure** with 3000mm internal width for tailboard housing, length according to NEW OIL chosen model
- **Corrugated steel sheet** for concrete casting



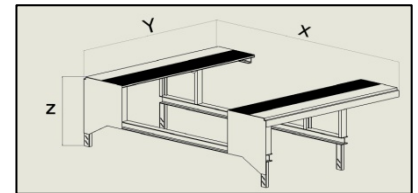
Quote 'z' has to be fixed altogether with customer according to established loading bay height

# 5. ACCESSORIES

## OVERBAY PROFILE



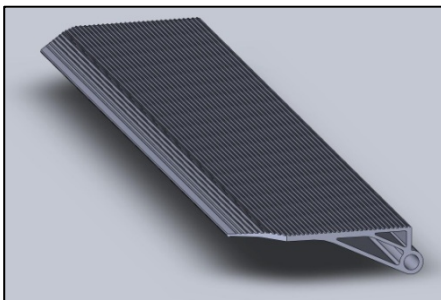
CODE	X (mm)	Y (mm)	PRICE (€)
XB 200	3450	2000	*1848
<b>XB 250</b>	<b>3450</b>	<b>2500</b>	<b>*2000</b>
XB 300	3450	3000	*2464



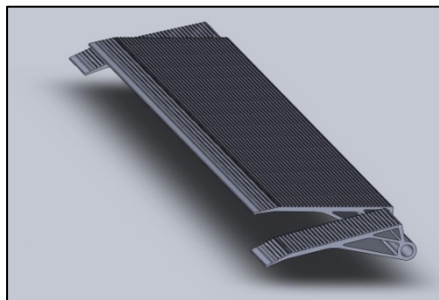
\* Prices refer only to the overbay profile, the ramp itself is not included

Z factor is to be established according to the bay's height

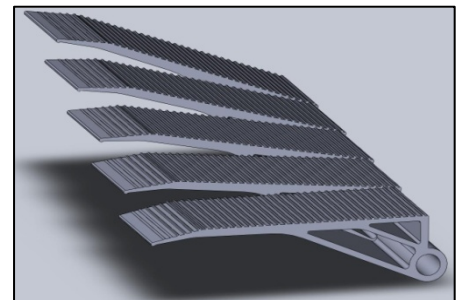
## DIFFERENT CONNECTION LIP TYPES



Surplus for 45° cut lip



Surplus for side flaps cutting



Surplus for complete segmentation

## DIFFERENT POWER PANELS

**QCSEZ**  
 Combo panel  
 for double  
 ramp/door  
 control



**QCMEC**  
 Mecanical  
 panel

