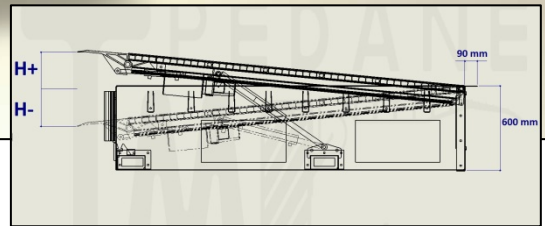
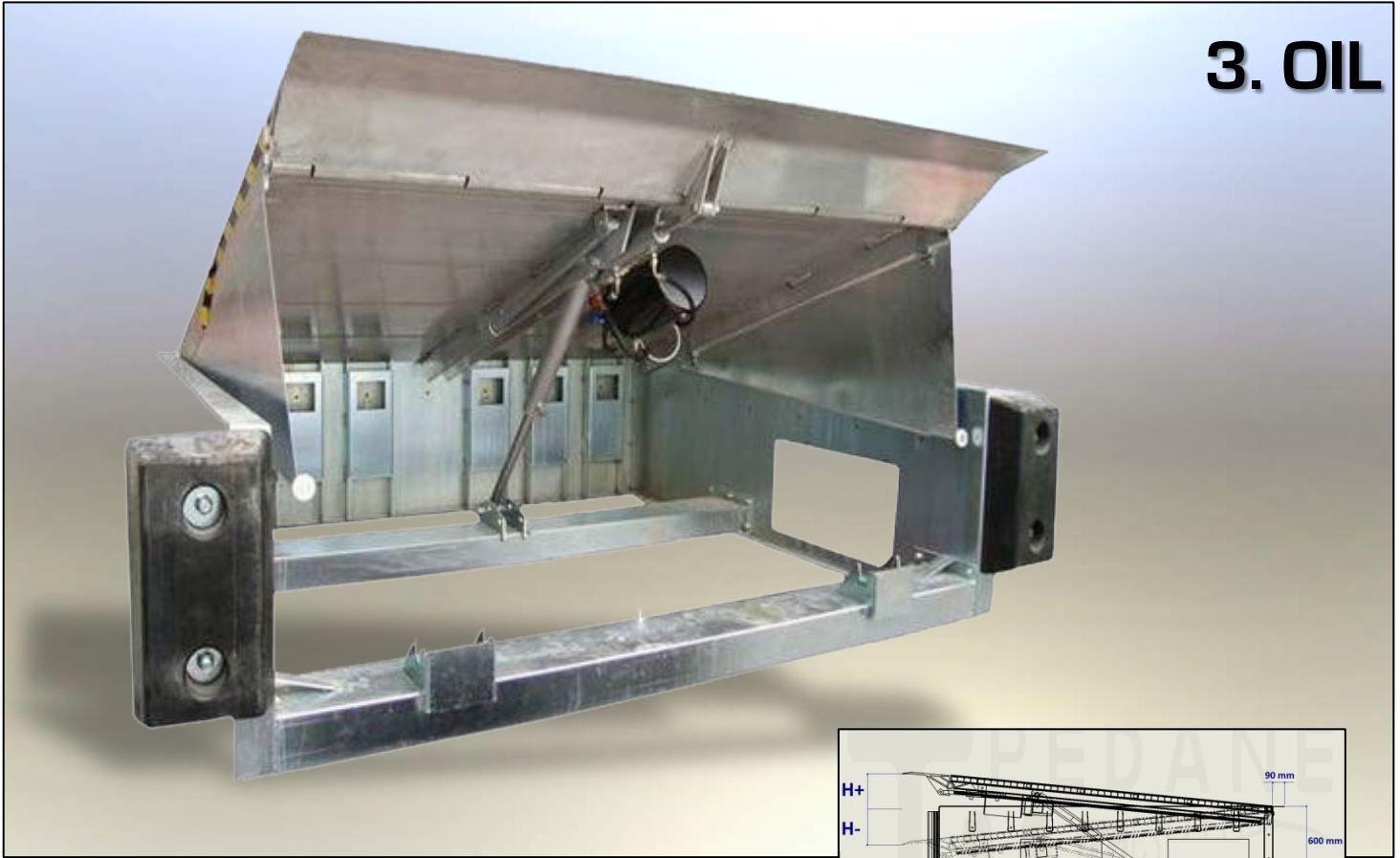
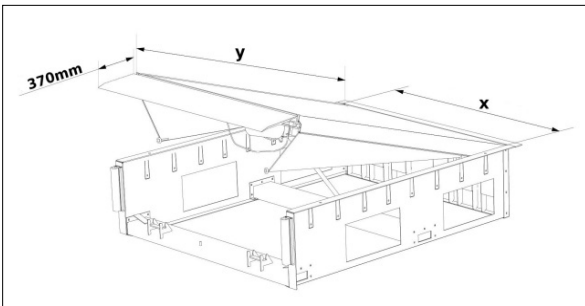


3. OIL



DETAILS

- Plate in aluminum extruded 6060 with 6000kg maximum capacity and anti-slip cross-ribbing surface treatment. Profile specifically engineered for concentrated loads
- Hinged aluminum lip on one 370mm extruded with antislip surface and hinge joint without added elements



- Double effect lip control oil piston.
- Galvanized steel boxframe for installation before pit construction
- Single effect plate lifting oil piston with parachute valve
- hydraulic control unit activated by three-phase engine
- Power panel according to CEI 20/22/2 (IP 55) standards with 7mts long connection cable included
- Standard TAM2F rubber buffers (see TAM LINE chpt.) included
- Anticrushing/shearing hinged carters.

CODE	X mm	Y mm	H+/- mm	WEIGHT kg
OIL150A-ALL	1650	1500+ LIP 370	240	200
OIL200A-ALL	1650	2000+ LIP 370	300	250
OIL250A-ALL	1650	2500+ LIP 370	360	330
OIL300A-ALL	1650	3000+ LIP 370	430	400
OIL150B-ALL	2000	1500+ LIP 370	240	250
OIL200B-ALL	2000	2000+ LIP 370	300	330
OIL250B-ALL	2000	2500+ LIP 370	360	430
OIL300B-ALL	2200	3000+ LIP 370	430	470
OIL150C-ALL	2200	1500+ LIP 370	240	280
OIL200C-ALL	2200	2000+ LIP 370	300	360
OIL250C-ALL	2200	2500+ LIP 370	360	460
OIL300C-ALL	2200	3000+ LIP 370	430	500

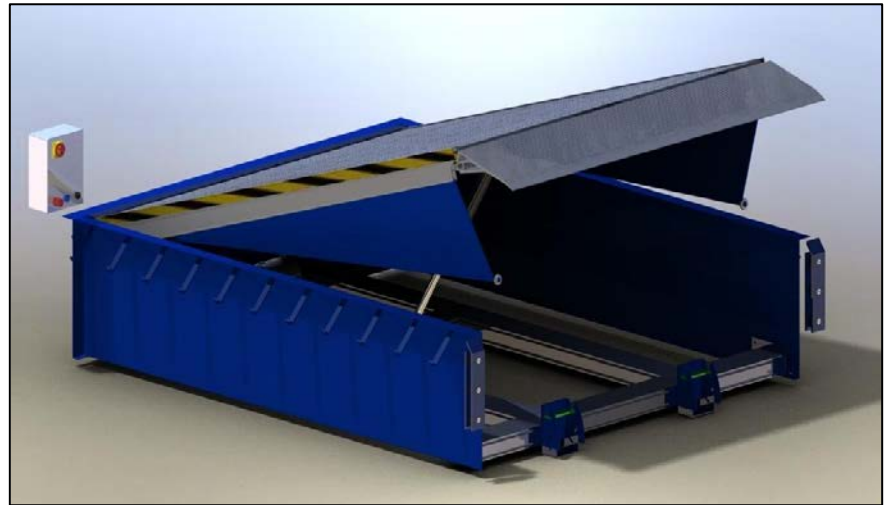
**CAPACITY
6000 KG**

H+/-
 difference in height
 calculated according to
 UNI EN 1398 standard
 for **12,5% gradient allowed**
 for forklifts

5. ACCESSORIES

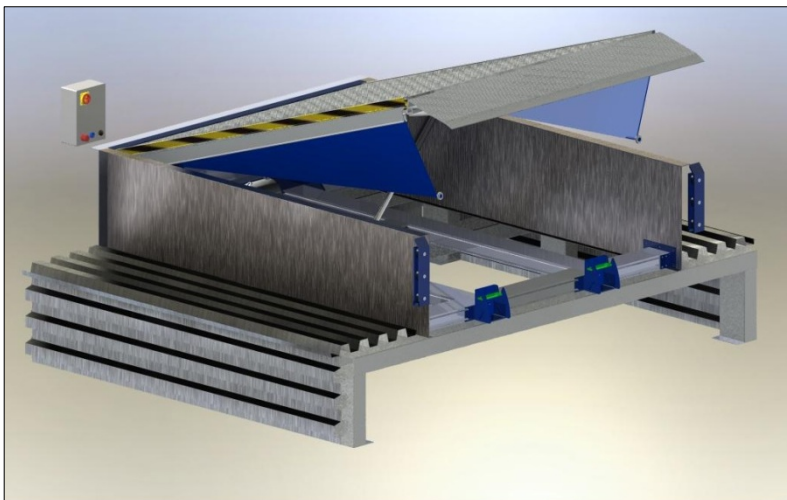
BF:

optional boxframe elements
 to be combined with
NEW OIL STANDARD
 hydraulic dock levelers
 for installation
 before pit construction



DETAILS:

- Couple of lateral press-formed 4mm thick sheets
- Backside press-formed thick sheet 100x200x3mm + coating 1mm thick sheet



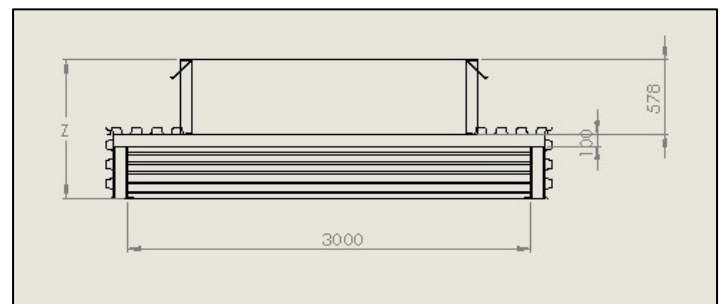
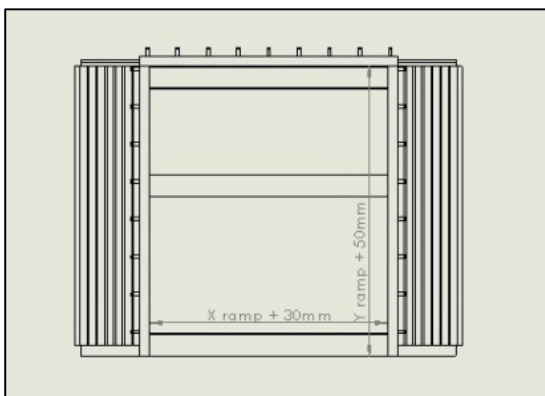
VS:

tailboard housing

Combinable with
NEW OIL STANDARD + BF or OIL
 hydraulic dock levelers
 in order to load/offload trucks
 with CANTILEVER TAIL LIFTS

DETAILS:

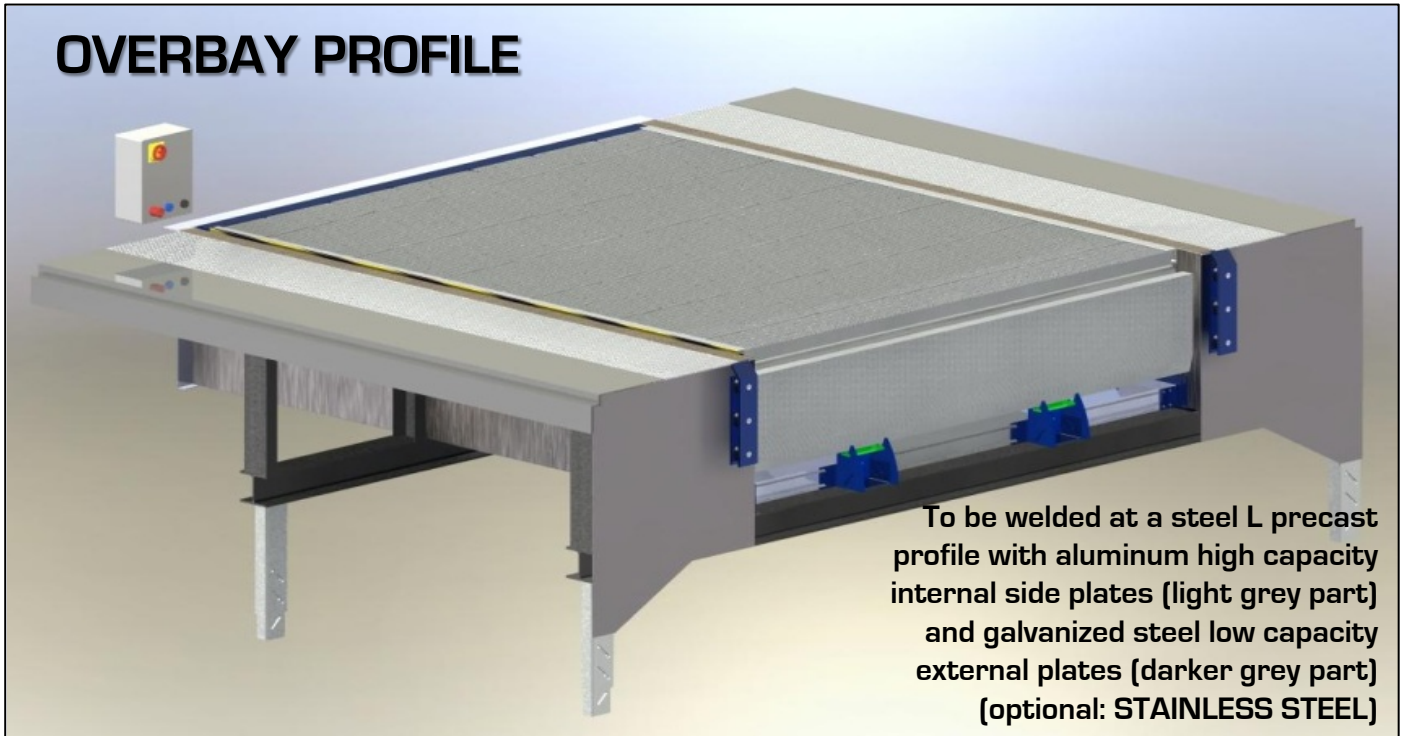
- **Tubular galvanized steel structure** with 3000mm internal width for tailboard housing, length according to NEW OIL chosen model
- **Corrugated steel sheet** for concrete casting



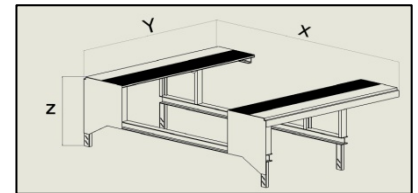
Quote 'z' has to be fixed altogether with customer according to established loading bay height

5. ACCESSORIES

OVERBAY PROFILE



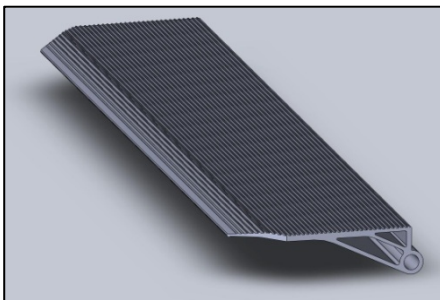
CODE	X (mm)	Y (mm)	PRICE (€)
XB 200	3450	2000	*1848
XB 250	3450	2500	*2000
XB 300	3450	3000	*2464



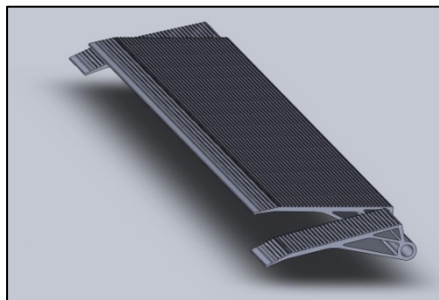
* Prices refer only to the overbay profile, the ramp itself is not included

Z factor is to be established according to the bay's height

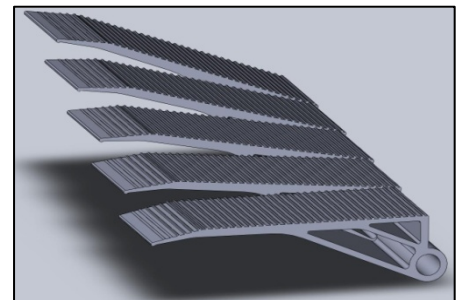
DIFFERENT CONNECTION LIP TYPES



Surplus for 45° cut lip



Surplus for side flaps cutting



Surplus for complete segmentation

DIFFERENT POWER PANELS

QCSEZ
 Combo panel
 for double
 ramp/door
 control



QCMEC
 Mecanical
 panel

